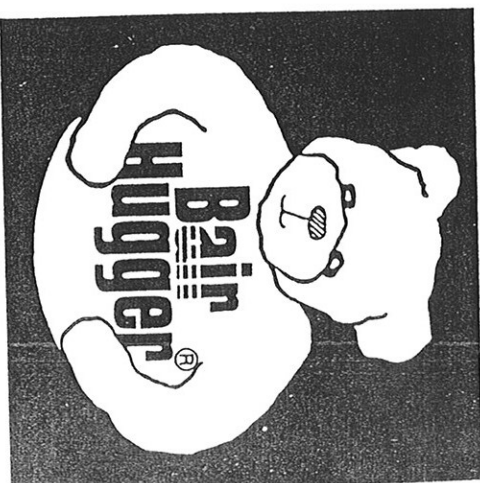


**INSTRUCTION MANUAL**

## **Versatile Bair Hugger® Warming for the Operating Room**

- Upper Body Blanket
- Torso Blanket
- Lower Body Blanket
- Cub™ Blanket



## **FOLLOW SPECIFIC INSTRUCTIONS INCLUDED WITH EACH BAIR HUGGER® BLANKET**

### **INDICATIONS:**

For patient warming.

### **CONTRAINDICATIONS:**

Do not apply heat to lower extremities during aortic cross-clamping. Thermal injury may occur if heat is applied to ischemic limbs.

### **WARNINGS:**

1. Use a Bair Hugger® Warming Blanket with Bair Hugger Model 500 or Model 500/OR Warming Unit. Use of a Bair Hugger Warming Blanket with any other warming unit may result in thermal injury.
2. The Bair Hugger Patient Warming System is patented and thermally balanced, assuring maximum heat transfer and safety. Failure to use a Bair Hugger Warming Blanket with the Bair Hugger Warming Unit could result in hot spots or exposure to temperatures outside the indicated range.
3. Place the Warming Blanket on the patient with the perforated side against the patient's skin.

4. Warming Blankets are not sterile and are intended for single patient use only. Placing a sheet between the Bair Hugger Warming Blanket and the patient does not prevent contamination of this product. Re-use of the Warming Blanket may cause cross-contamination.

5. Do not sterilize the Bair Hugger Warming Blanket. Materials have not been proven compatible with any sterilization method. Ethylene Oxide sterilization may leave toxic residues on the Warming Blanket.

6. Temperature in excess of therapeutic goal may result from failure to monitor the patient's temperature every 10 to 20 minutes.

7. If the Over Heat Warning Light illuminates and the audible alarm sounds, turn the Warming Unit "OFF" and discontinue use.

8. To prevent suffocation from misuse, do not leave children or infants untended when administering Bair Hugger Warming Therapy.

9. The clear plastic drape may cause visual distortion. Lift the plastic drape to clearly view the patient's head.

10. Avoid contact of a laser or an electrosurgical active electrode with blanket material or rapid combustion could result.

### **PRECAUTIONS:**

Monitor patient vital signs regularly. Reduce air temperature or discontinue therapy when the therapeutic goal is reached or if vital sign instability occurs. Notify physician of vital sign instability immediately.

See CONTRAINDICATIONS for patients who should not receive therapy.

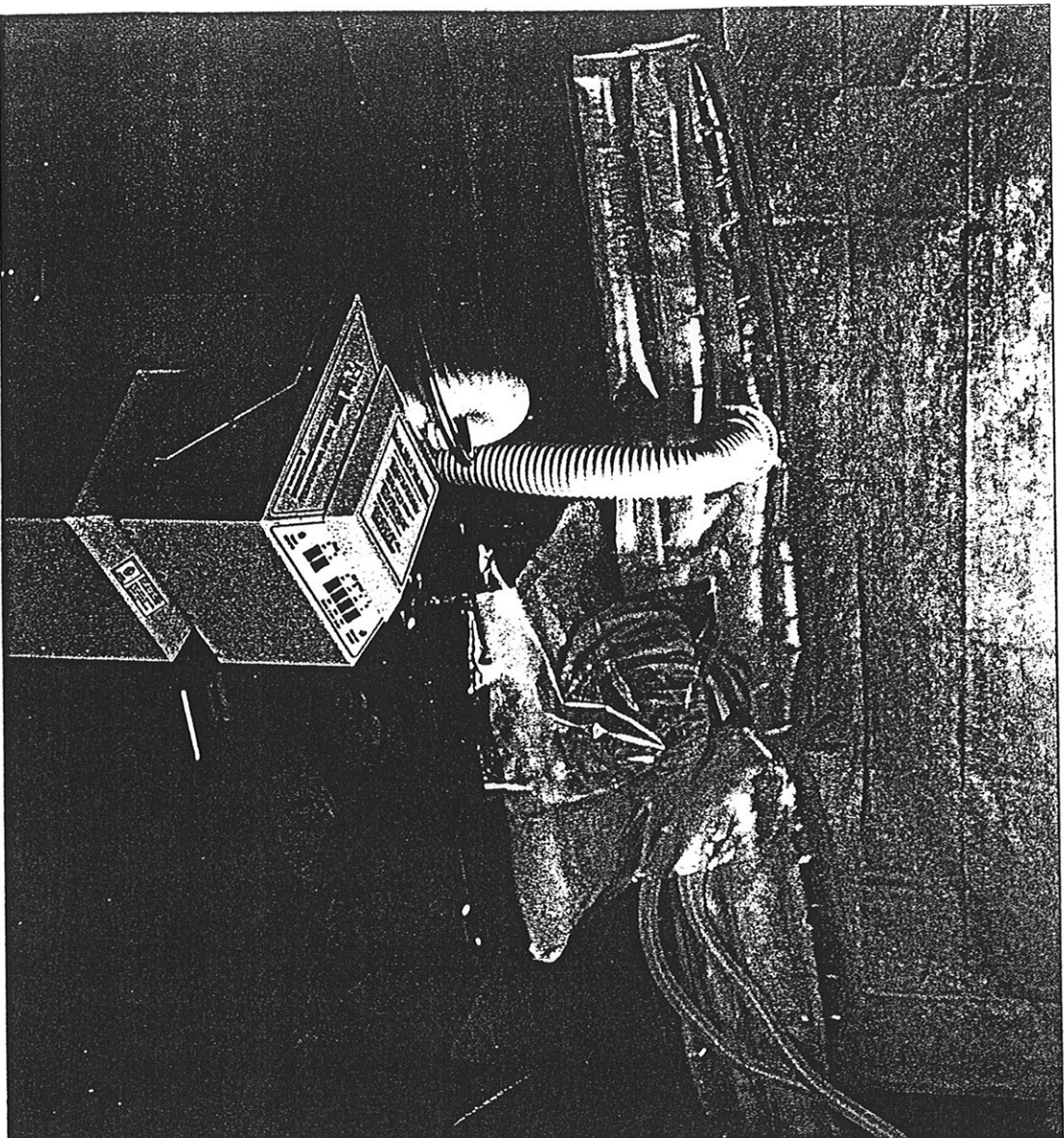
### **CAUTION:**

Read and understand the Bair Hugger Patient Warming System Operations Manual prior to use. Review WARNINGS and PRECAUTIONS. Carefully follow instructions for operation and maintenance.



## **FOLLOW SPECIFIC INSTRUCTIONS PACKAGED WITH EACH BAIR HUGGER® BLANKET**

1. Follow specific illustrated instructions packaged with each Bair Hugger® Warming Blanket for instructions particular to that Blanket model.
2. Place the Bair Hugger Warming Blanket on the patient with the perforated side against the patient's skin.
3. Remove the paper backing from the tape barrier and adhere to the patient. This prevents air migration towards the surgical site.
4. Insert the Bair Hugger Warming Unit hose into the cardboard inlet on the Warming Blanket.
5. Place a cotton blanket over the Warming Blanket for maximum effectiveness.
6. After the surgical prep and draping are complete, turn the Warming Unit "ON" and select the appropriate temperature. Use this Warming Blanket only with the Model 500 or 500/OR Warming Unit.
7. Monitor the patient's temperature every 10 to 20 minutes and adjust the temperature setting of the Warming Unit as required.
8. See accompanying photographs for correct placement of the Bair Hugger Warming Blanket for proper positioning.



## **Upper Body Blanket**

Model 520

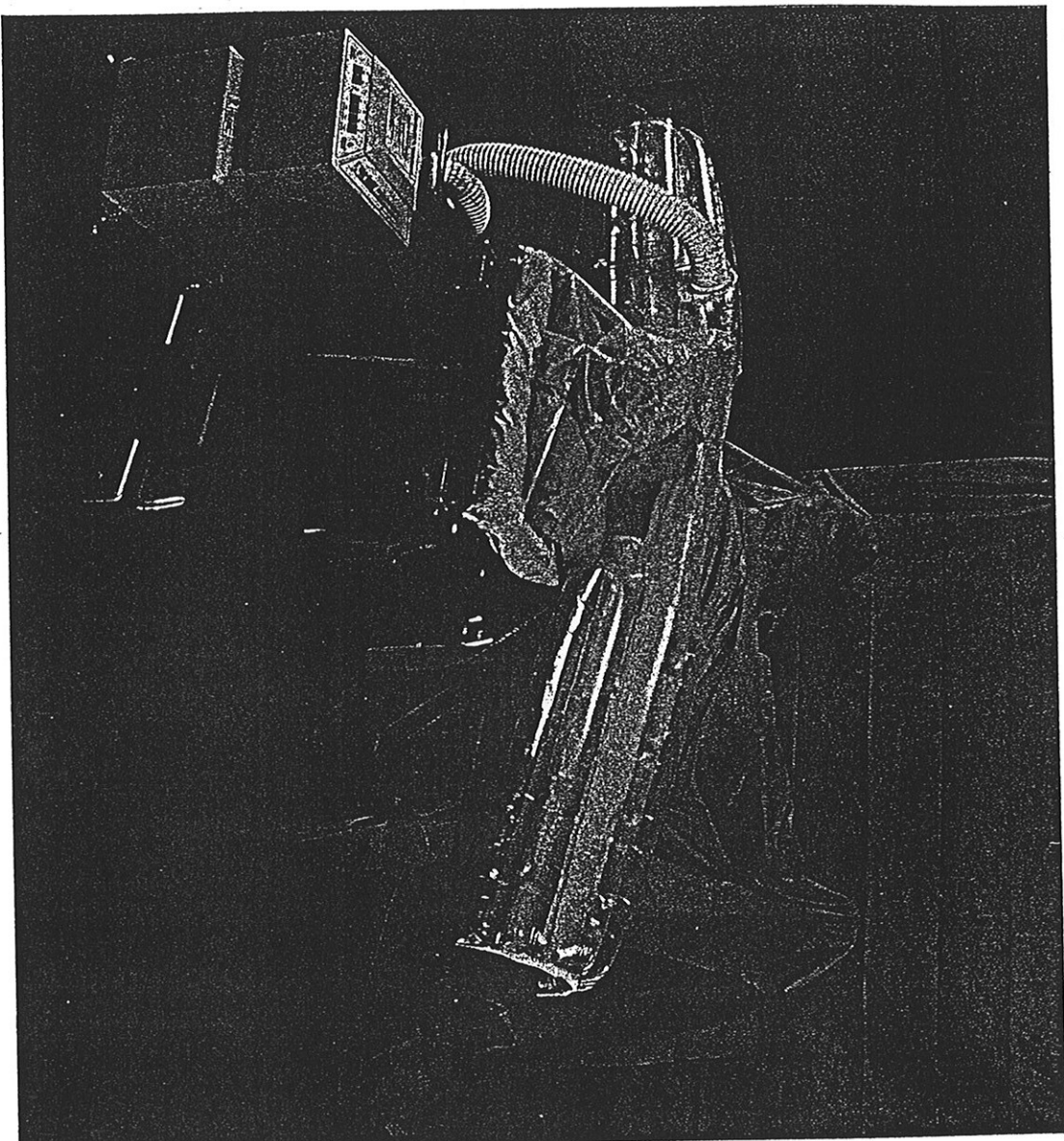
The Upper Body Blanket covers the upper torso, arms, neck and head of the patient. Consequently, it is well-suited for surgeries on the lower half of the body.

Standard positioning of the Upper Body Blanket uses two armboards. However, an armboard is not essential.

The Upper Body Blanket is most commonly used in the supine position.

Examples: laparotomy, arthroscopy of the knee and cholecystectomy.





## **Upper Body Blanket**

**Model 620**

The Upper Body Blanket works with equal effectiveness when the lithotomy position is used.

Examples: TURP and prostatectomy.

XXXXXXXXXXXXXXXXXXXXXXXXXXXX

and major principles:





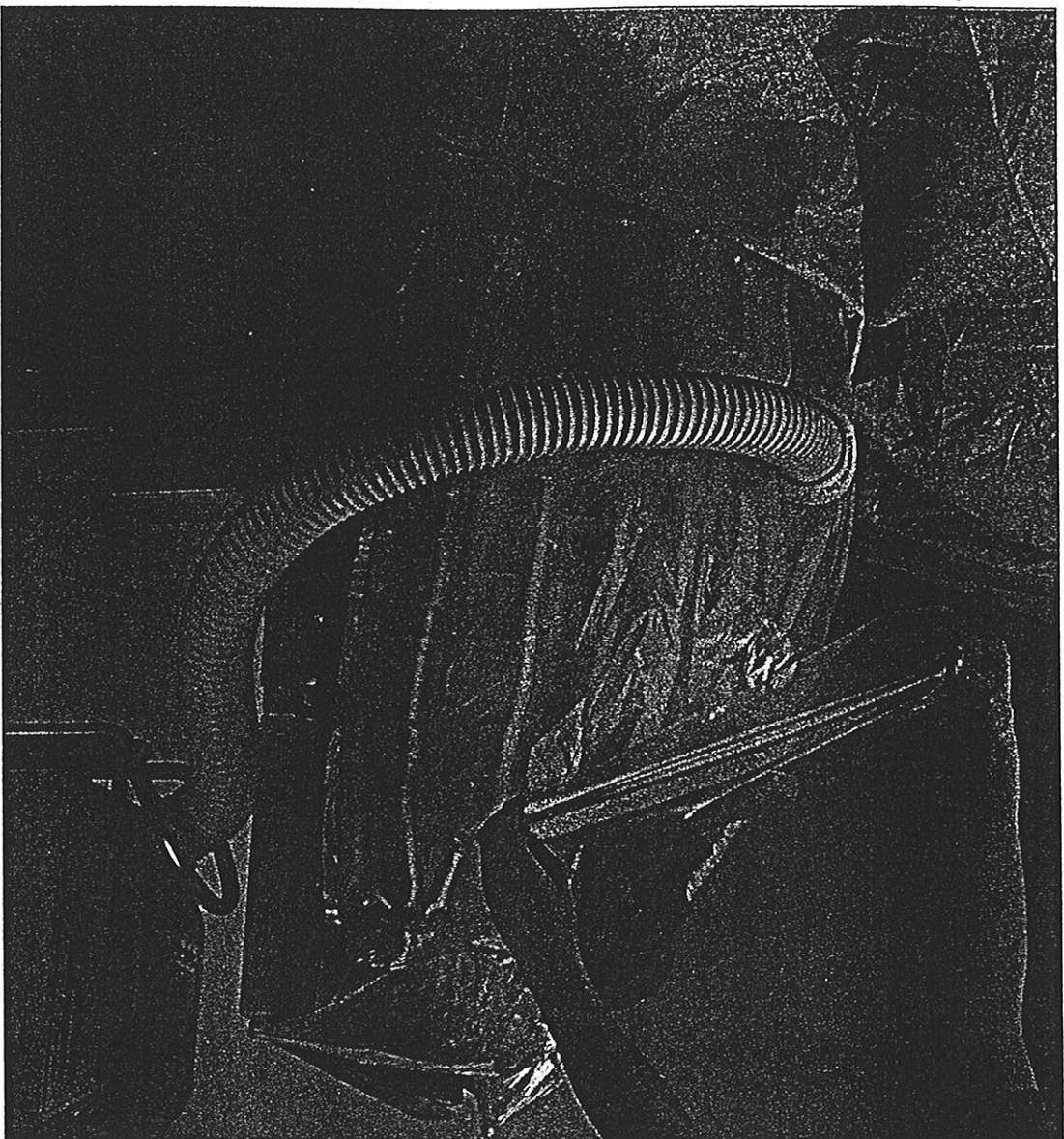
---

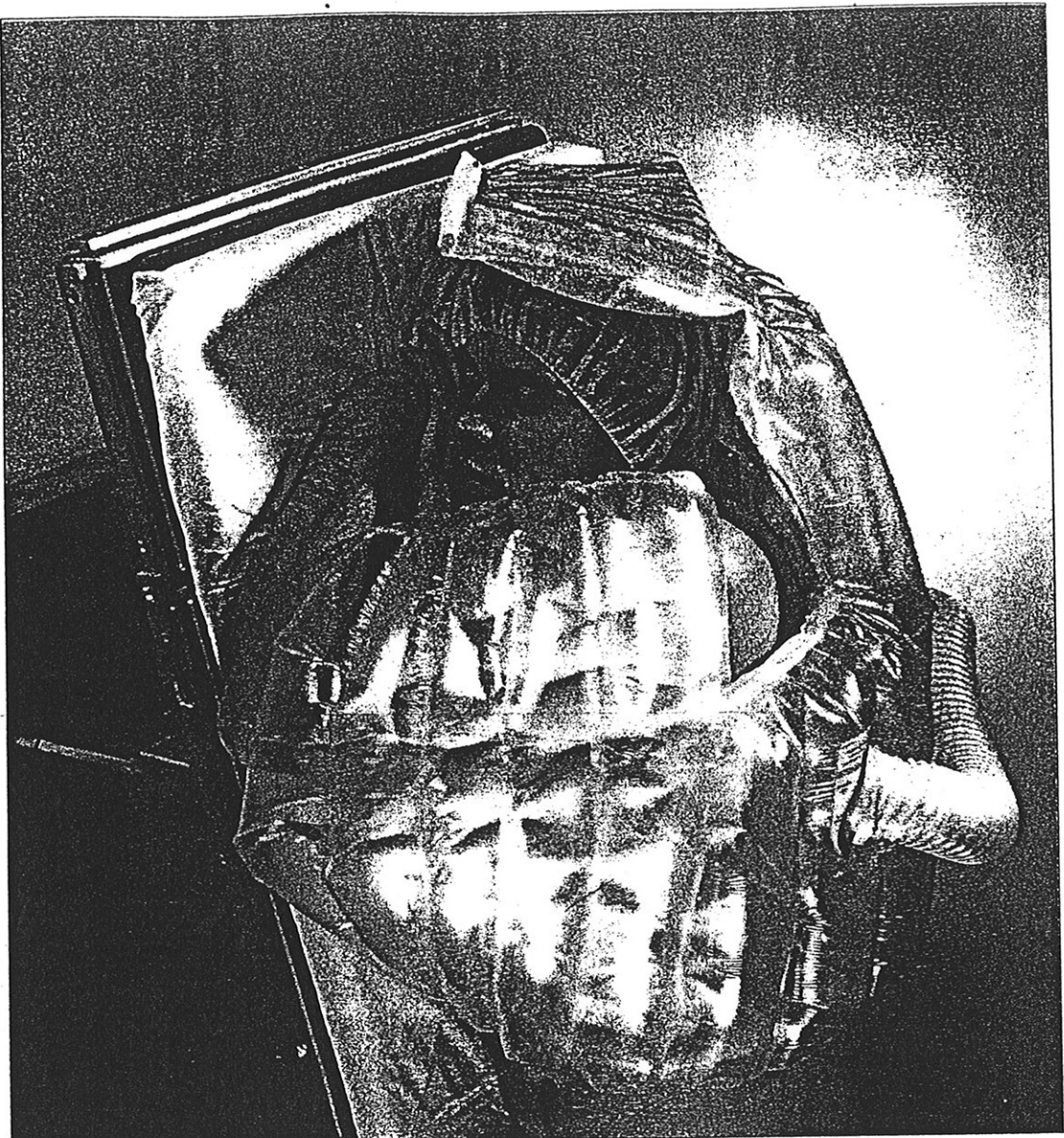
## **Torso Blanket**

**Model 540**

The Torso Blanket is designed to affix to the lower abdominal area of the patient and to warm the upper one-half of the body.

Examples: Arthroscopy of knee, cystoscopy and TURP.





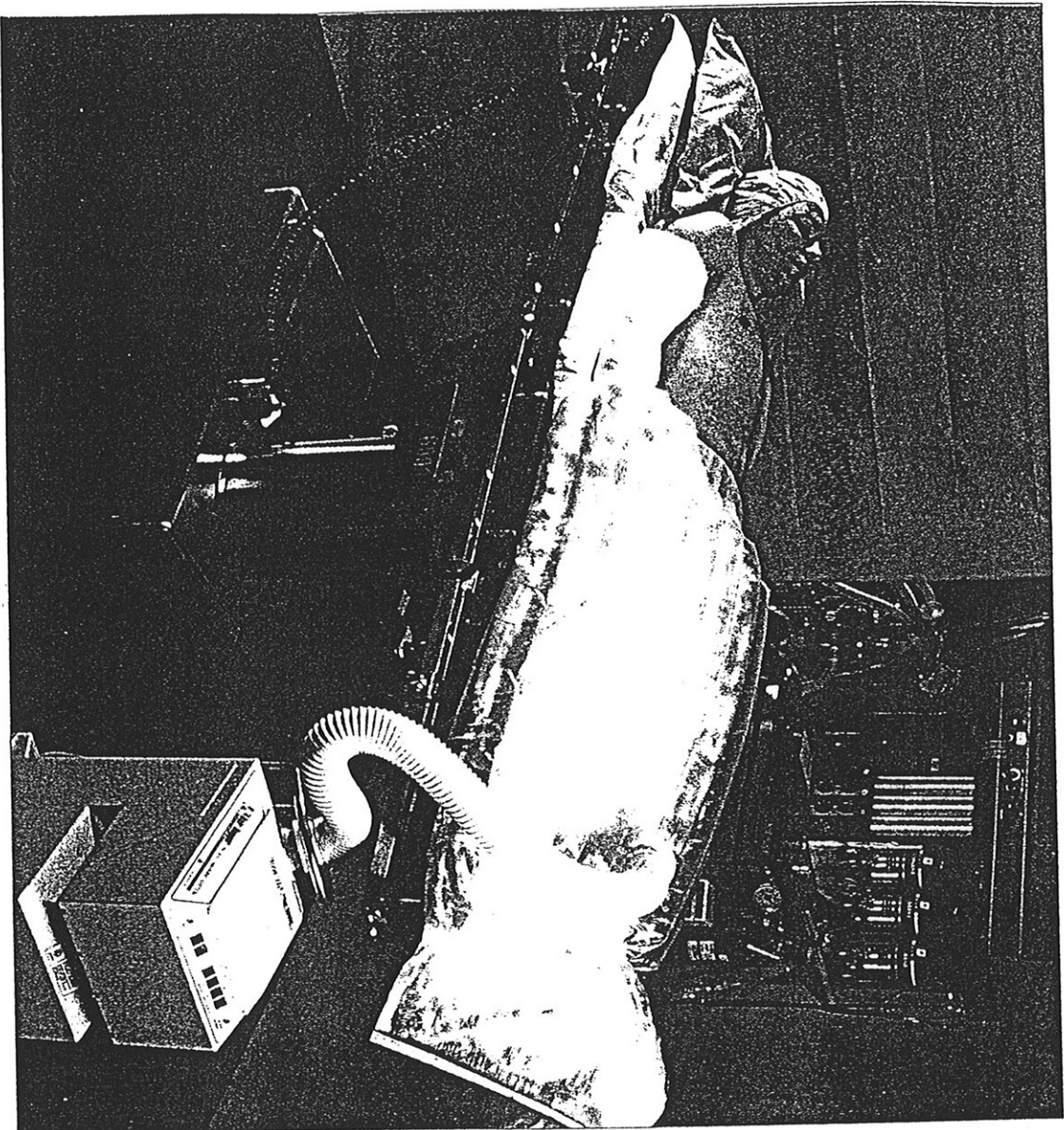
## **Torso Blanket**

Model 540

The Torso Blanket can also be used in the lateral position.

Example: Total hip replacement.





## **Lower Body Blanket**

Model 525

The Lower Body Blanket is highly versatile. The Lower Body Blanket can be used effectively when the patient is positioned supine, prone or lateral. It may even be applied over the upper body.

The Lower Body Blanket is primarily designed for surgery on the upper half of the body: upper abdomen, thorax, head, neck and arms.

The standard position of the Lower Body Blanket: Patient supine, as depicted at left.

Examples: cholecystectomy, kidney transplant, gastrectomy, shoulder arthroplasty, laryngectomy and craniotomy.

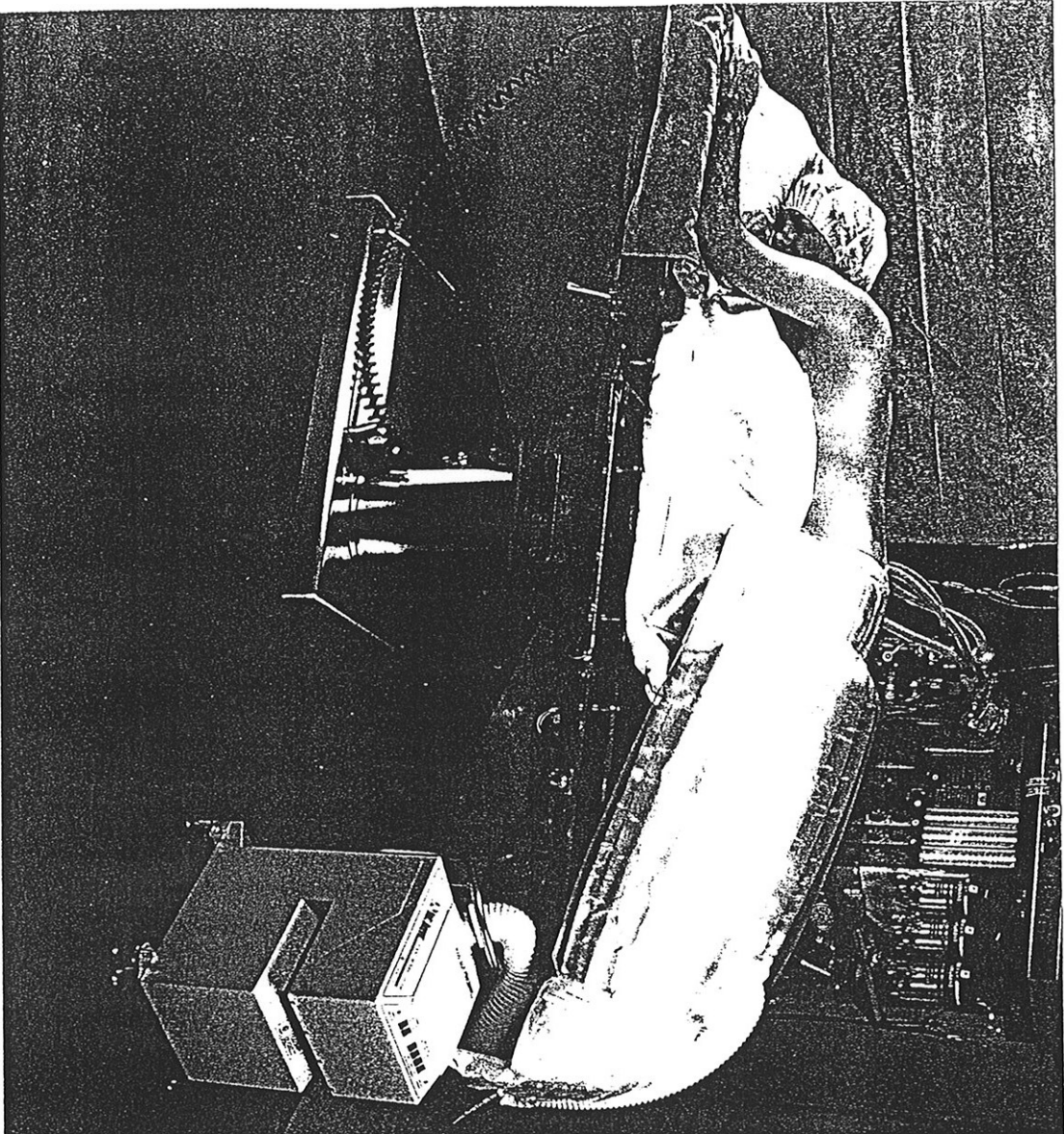
www.hillrom.com

## Lower Body Blanket

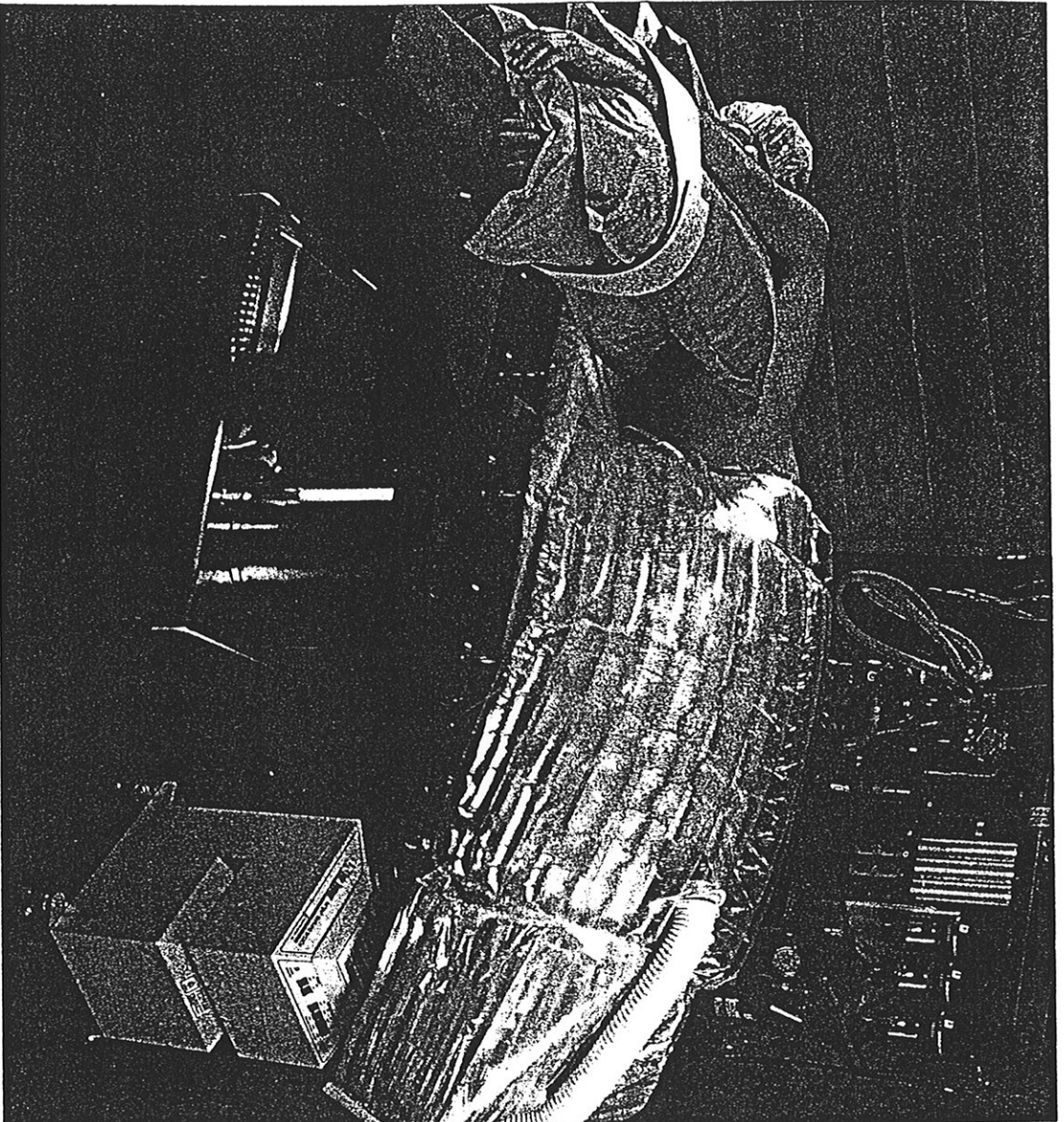
Model 525

Positioning of the Lower Body Blanket for spinal procedures.

Examples: lumbar laminectomy and spinal fusion with instrumentation.







---

## **Lower Body Blanket**

**Model 525**

Lateral position with arms extended from chest.

The patient is positioned on side, supported with an axillary roll.

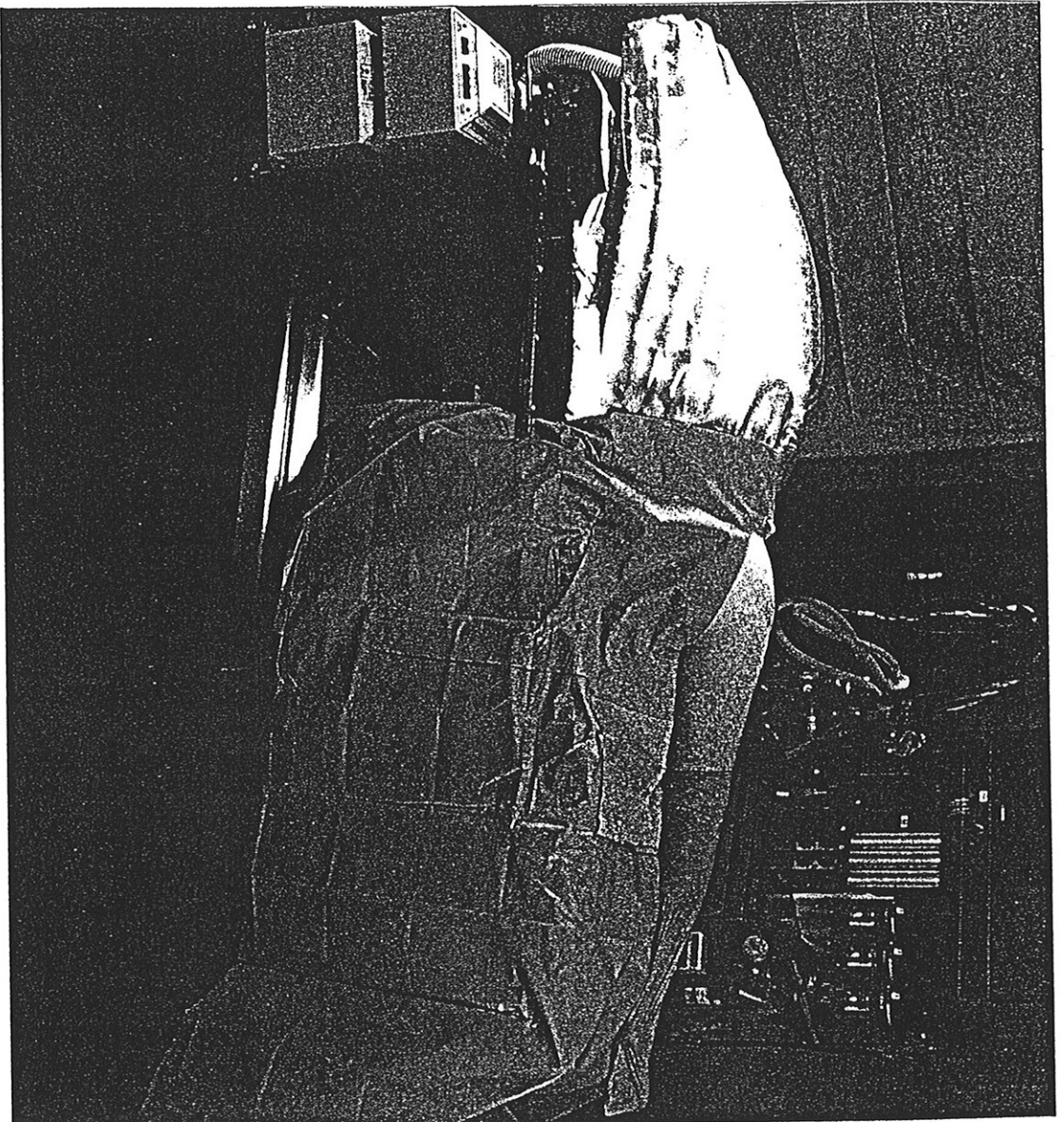
Example: thoracotomy.

[illegible]

Model 525





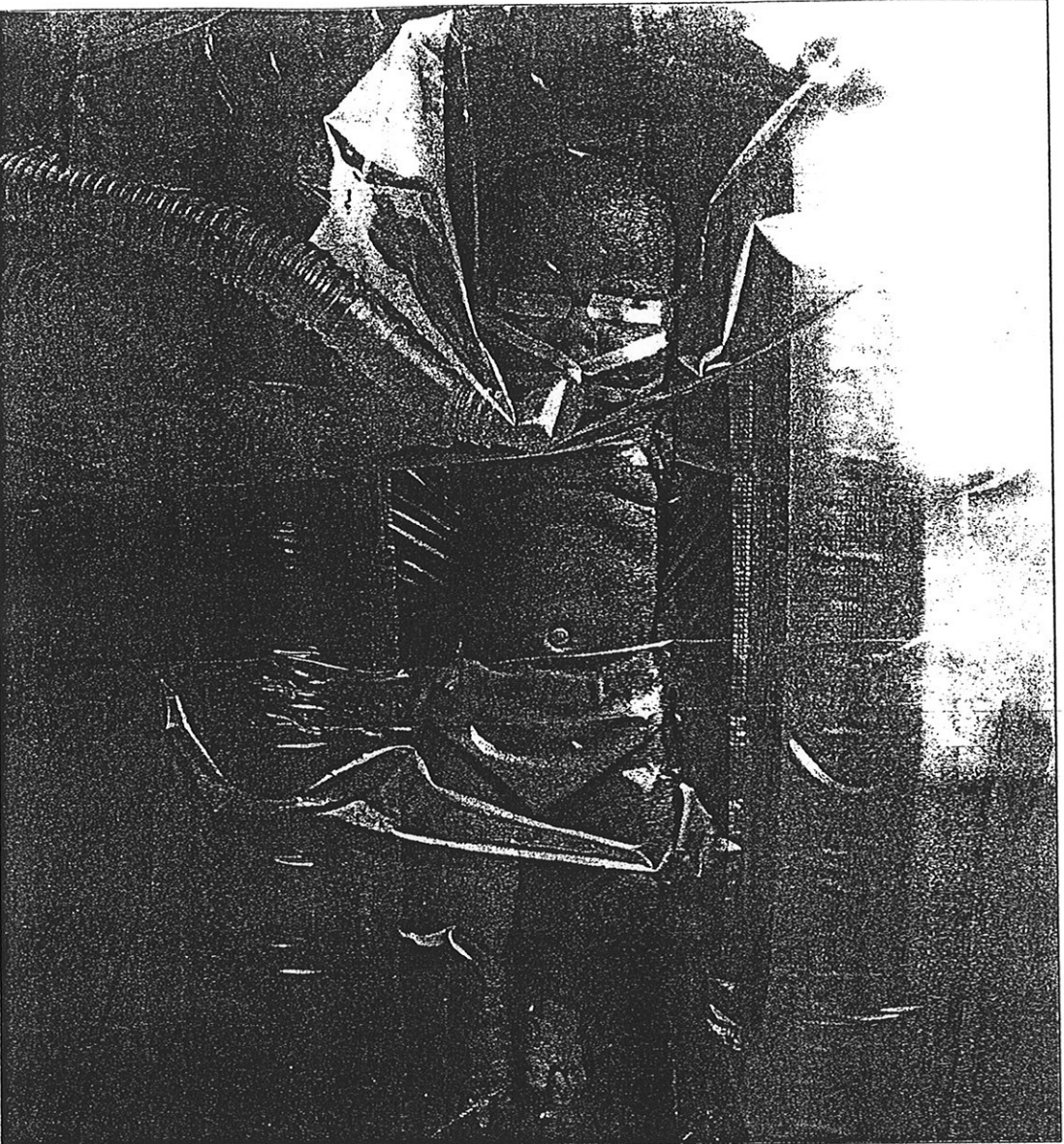


## **Lower Body Blanket**

**Model 525**

The versatility of the Lower Body Blanket allows it to be positioned over the patient's upper body for a total hip replacement.

The patient is positioned laterally, and the foot drape of the Lower Body Blanket is removed by cutting along the heat seal line between the noninflated sections of the Blanket.



## **Cub™ Blanket—Long**

Model 530

The Cub™ Blanket is designed for the newborn to five-year-old.

Positioning for intra-abdominal surgery.

The patient is supine with the Blanket affixed to the side of the child's chest, abdomen and upper legs. Two clear plastic drapes are affixed to the child, after intubation. One drape is affixed to the child at the nipple line, covering the head. The second drape is affixed at the lower abdomen, covering the groin and legs. This leaves the abdomen exposed for surgery.

Examples: laparotomy, Nissen procedure and colostomy.





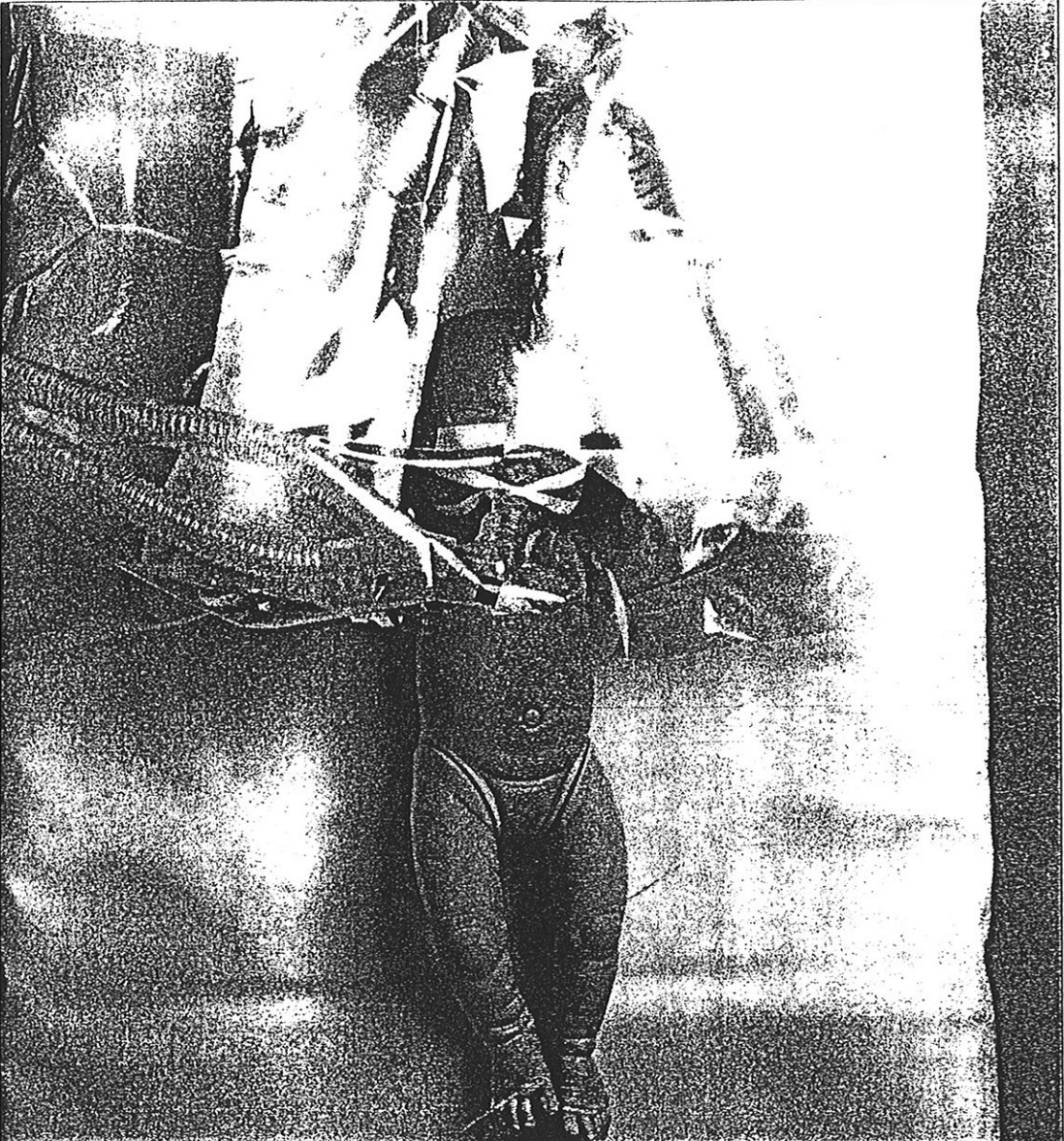
## **Cub™ Blanket—Long**

Model 530

Positioning for head surgery.

The patient is supine with Blanket affixed to the sides of the child's chest, abdomen and upper legs. One clear plastic drape is affixed to the upper chest and shoulders, leaving the head exposed for surgery.

Examples: Head, neck, facial, cleft palate and intraoral procedures.



## **Cub™ Blanket—Short**

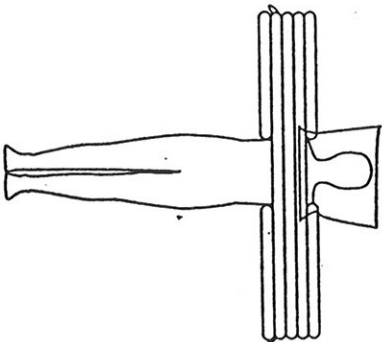
Model 538

Positioning for abdominal and lower extremity surgery.

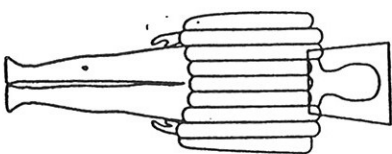
Patient's arms are abducted less than 90° under inflated portion of blanket. End of Blanket aligns approximately with patient's nipples, leaving space above patient's head.

Examples: laparotomy, ureteral reimplantation.

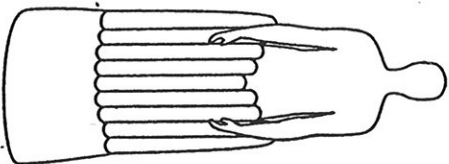
**Model 520, Upper Body Blanket**



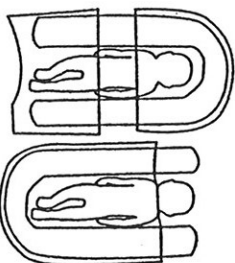
**Model 540, Torso Blanket**



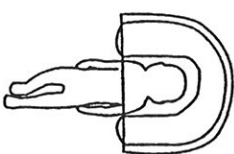
**Model 525, Lower Body Blanket**



**Cub<sup>TM</sup> Blanket**



Cub Blanket—Long  
Model 530



Cub Blanket—Short  
Model 536

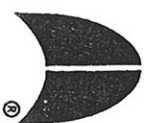
To order any of the specially-designed Bair Hugger<sup>®</sup> Warming Blankets for use in the OR, call Augustine Medical Customer Service at:

**1-800-733-7775 or**

**(612) 941-8866**

**or**

**Call your Bair Hugger Representative.**



**AUGUSTINE MEDICAL, INC.**  
*Practical Solutions to Common Problems in Acute Care*  
10393 West 70th Street, Eden Prairie, Minnesota 55344  
(612) 941-8866 • (800) 733-7775 • Fax: (612) 941-8858